

## News Articles

### Facility for online retrieval of User ID for Password Users of SPEED-e / IDeAS facility

NSDL provides common internet based facilities called **SPEED-e** and **IDeAS** through its e-Services website (<https://eservices.nsd.com>) which facilitates demat account holders to submit delivery instructions to their DPs online instead of submitting delivery instruction slips (in paper form) and view status of instructions submitted on **SPEED-e**. Further, **IDeAS** enables demat account holders to view latest balances alongwith the value based on the previous day closing price and transactions that have taken place during last 30 days in their demat accounts. **IDeAS** also provide the facility of downloading, printing and viewing digitally signed monthly transaction statements for previous 12 months.

Participants are hereby informed that password Users (i.e. Clients) of **SPEED-e / IDeAS** facilities will be given the ability to retrieve forgot User ID themselves by keying-in few parameters on e-Services website. The User ID will be made available to the clients online after successful validation of the demat account details captured by the users on **SPEED-e / IDeAS** facility. This facility will eliminate the need for Clients to submit revocation request of present User ID by quoting Client ID to their Participants and re-registration of **SPEED-e / IDeAS** facility after revocation of existing User Id.

The procedure for **Retrieval of User ID** for **SPEED-e / IDeAS** facility is posted on i-Assist.

(Ref: Circular No. NSDL/POLICY/2017/0004 dated January 16, 2017)

Take a look...

### Highlights during the month

News Articles

Companies Name Change

Corporate Action Statistics

Performance Summary

Securities Admitted For Dematerialisation

Calendar of Events

### Performance Summary

	Investor Accounts	1,53,37,535
	Participants	268
	Participant Service Centres	27,357
	Demat Custody	₹ 1,36,05,175 Cr.
	Settlement	₹ 1,80,531 Cr.
	Companies available for demat	17,266
	<b>Instruments</b>	
	◆ Debentures/Bonds	14,600
	◆ Securitised Instruments	1,917
	◆ Commercial Paper	2,573
	◆ Certificates of Deposit	517

## Acquisition of Shares pursuant to Tender-Offers through Stock Exchange Mechanism

SEBI vide its circular no. CFD/DCR2/CIR/P/2016/131 dated December 9, 2016 had informed regarding streamlining the process for acquisition of shares pursuant to Tender-Offers made for takeovers, buy back and delisting of securities. Accordingly, demat account holders who are maintaining demat accounts with Participants of NSDL would be able to transfer the securities directly to the account maintained by the Clearing Corporation in respect of the tender offers.

In this regard, Participants are requested to take note of changes in static data code (incorporation of new booking code) in respect of download of SOT / SOH for the back-office interface with Local DPM system in respect of settlement of tender-offers viz., takeover, buy back and delisting of securities through stock exchange platform. In view of this, new booking code, instruction status code & description are given below:

### 1) New Booking Code

Booking Code	Booking Narration Code (Description)
11514	ACCOUNT_TRANSFER_TENDER_OFR_HOUSE_TO_TRANSIT_HOUSE
11515	ACCOUNT_TRANSFER_TENDER_OFR_NONHOUSE_TO_TRANSIT_NONHOUSE
11603	CM_POOL_TO_CC_SETTLEMENT

### 2) Instruction Status Code and description in Account Transfer module

Status Code	Description
45	Instruction ready for settlement

Further details about this circular are posted on NSDL website [www.nsd.co.in](http://www.nsd.co.in).

(Ref: Circular No. NSDL/POLICY/2017/0006 dated January 27, 2017)

## Training Programme for Participants:

### ➤ CPE Training Programme for Participants

NSDL, an approved NISM Accredited Continuing Professional Education (CPE) Provider offers CPE training programmes viz. Depository Operations, Mutual Fund Distributors, Currency Derivatives, SORM, RTA-Corporate & SIC for eligible associated persons of Participants. In January 2017, NSDL conducted five such training programmes at various locations viz., Ahmedabad, Kolkata, Mumbai & New Delhi which were attended by 125 officials of Participants.

## List of Companies that have changed Names (During January 2017)

Sr. No.	Old Name	New Name
1	Adani Green Energy (Telangana) Limited	Adani Wind Energy (Ap) Limited
2	Dbc Port Logistics Limited	Speedv Multimodes Limited
3	Woolite Mercantile Company Limited	Prism Medico And Pharmacy Limited
4	Indigo Edutainment Private Limited	Indigo Edutainment Limited
5	Artlink Vintrade Private Limited	Artlink Vintrade Limited
6	Aadri Infin Limited	Lendingkart Finance Limited
7	Microsec Financial Services Limited	Sastasundar Ventures Limited
8	Slashsupport India Private Limited	Css Corp Private Limited
9	Ilms Developers Private Limited	Rishiraj Enterprises Private Limited
10	Associated Insurance Private Limited	Sgr Healthcare Private Limited
11	Basant Marketing Private Limited	Basant Marketing Limited
12	Kalyan Jewellers India Private Limited	Kalyan Jewellers India Limited
13	Parth Alluminium Limited	Maitri Enterprises Limited
14	Idfc Infra Debt Fund Limited	Idfc Infrastructure Finance Limited
15	Welplace Portfolio And Financial Consultancy Services Limited	Generic Engineering Construction And Projects Limited
16	Sabrimala Leasing And Holdings Limited	Sabrimala Industries India Limited
17	Hewlett-Packard Globalsoft Private Limited	Eit Services India Private Limited
18	Anwasha Comtech Engineering Private Limited	lot Anwasha Engineering & Construction Limited
19	Golden Properties And Traders Ltd	Garbi Finvest Limited
20	Piramal Finance Private Limited	Piramal Finance Limited
21	Fiat India Automobiles Limited	Fiat India Automobiles Private Limited
22	Jindal Online.Com Limited	Kashyap Tele-Medicines Limited

## Corporate Action Statistics

Sr. No.	Description	During January 2017		For F.Y. 2016 - 17 (Upto January 2017)	
		No. of Allottees	No. of Securities	No. of Allottees	No. of Securities
1	Equity Shares	697,014	15,536,099,564	7,440,218	110,364,603,943
2	Preference Shares	48	849,305,413	73,796	10,082,099,867
3	Bonds	28,360	893,935,366	139,630	5,103,295,313
4	Commercial Papers	809	2,685,899	9,511	32,893,729
5	Certificates of Deposit	103	2,184,000	2,043	29,206,979
6	Securitised Instruments	61	6,458,352,945	869	83,422,516,289
7	Mutual Fund Units	191,162	2,573,733,199	659,876	5,404,330,882
8	Government Securities	137	10,027	61,385	2,280,101
9	Warrants	5	4,106,847	183	844,311,064
10	Mutual Fund Units (Trase)	52,277	204,172,503	437,675	1,610,871,336
	<b>Total</b>	<b>969,976</b>	<b>26,524,585,763</b>	<b>8,825,186</b>	<b>216,896,409,503</b>

## Performance Summary

### INVESTORS

Month - Year	Client Accounts
	No. of Accounts (lakhs)
Jan-15	136.97
Jan-16	143.86
Jan-17	153.37

### PARTICIPANTS

Month - Year	No. of Participants	Service Centres	Cities / Towns
Jan-15	273	15,936	1,550
Jan-16	272	25,948	1,930
Jan-17	268	27,357	1,944

### DEMATERIALISATION

Month - Year	No. of Dematerialised Securities (Cr.)	Value of Dematerialised Securities (₹ Cr.)
Jan-15	90,331	1,17,01,062
Jan-16	104,579	1,14,56,292
Jan-17	125,945	1,36,05,175

### SETTLEMENT (LISTED EQUITY SHARES)

Month - Year	Quantity of shares settled in dematerialised form (Cr.)	Value of shares settled in dematerialised form (₹ Cr.)
Jan-15	756	1,69,106
Jan-16	807	1,47,639
Jan-17	803	1,80,531

(Single Side)

### EQUITY

#### Companies

Month - Year	No. of Companies Operational
Jan-15	13,620
Jan-16	15,266
Jan-17	17,266

### DEBENTURES / BONDS

Month - Year	No. of Issuers	No. of active instruments	Demat Value (₹ Cr.)
Jan-15	1,078	10,807	16,80,247
Jan-16	1,308	12,751	19,52,183
Jan-17	1,623	14,600	23,17,927

### SECURITISED INSTRUMENTS

Month - Year	No. of Issuers	No. of active instruments	Demat Value (₹ Cr.)
Jan-15	906	1,257	1,15,760
Jan-16	1,113	1,470	1,20,111
Jan-17	1,473	1,917	1,65,174

### COMMERCIAL PAPERS

Month - Year	No. of Issuers	No. of active instruments	Demat Value (₹ Cr.)
Jan-15	287	1,745	2,89,167
Jan-16	358	2,054	4,15,779
Jan-17	422	2,573	4,27,847

### CERTIFICATES OF DEPOSIT

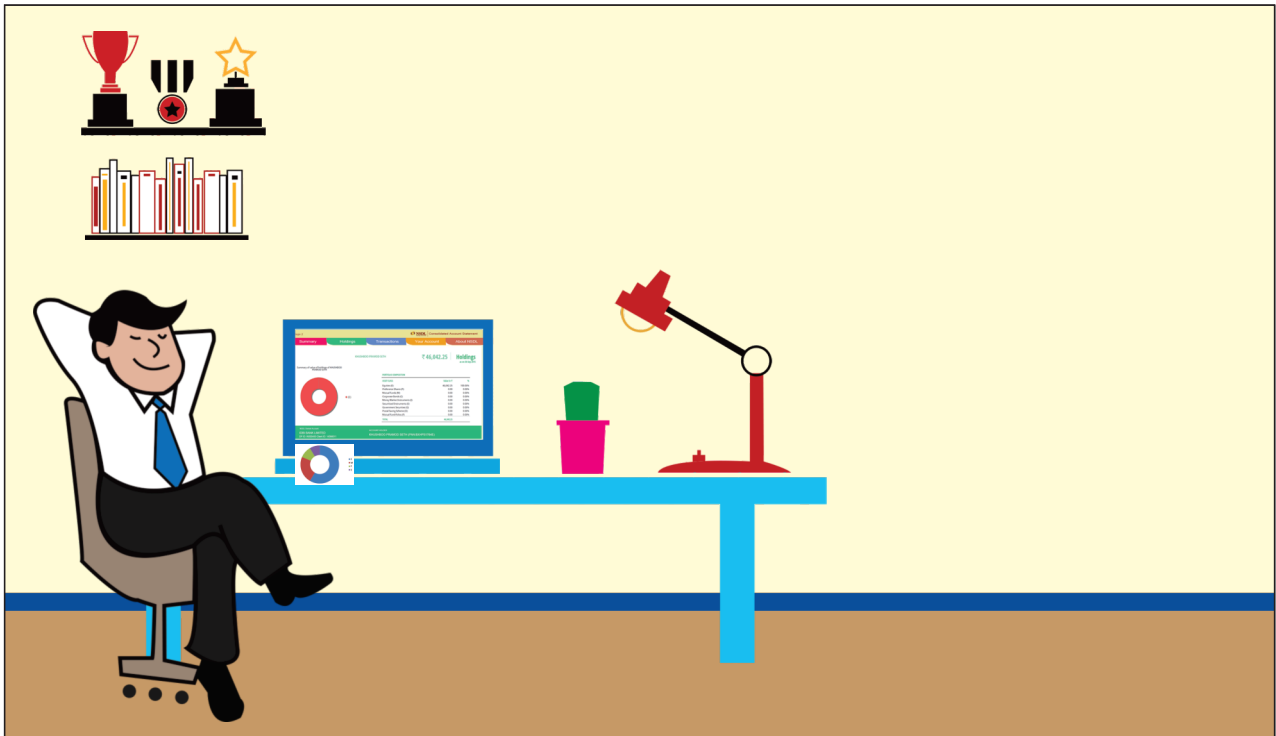
Month - Year	No. of Issuers	No. of active instruments	Demat Value (₹ Cr.)
Jan-15	41	1,020	2,99,306
Jan-16	37	569	2,56,574
Jan-17	32	517	1,80,249

## Securities admitted for Dematerialisation during January 2017

Sr. No.	COMPANY	ISIN	Sr. No.	COMPANY	ISIN
1	Aalok Solarfarms Limited	INE530W01012	43	Basix Municipal Waste Ventures Limited	INE503W01019
2	Aavantika Gas Limited	INE516W01011	44	Bhagyanagar Properties Limited	INE363W01018
3	Abha Solarfarms Limited	INE498W01012	45	Bhartiya Samruddhi Investments and Consulting Services Limited	INE481W01018
4	Accelyst Solutions Private Limited	INE515W01013	46	Bhumika Enterprises Private Limited	INE572W01014
5	Adani Vizhinjam Port Private Limited	INE386W01019	47	Biorad Medisys Private Limited	INE417W01012
6	Adani Wind Energy (Gujarat) Private Limited	INE519W01015	48	Carbogen Amcis (India) Limited	INE385W01011
7	Albany Molecular Research Hyderabad Research Centre Private Limited	INE500W01015	49	CG Tollway Private Limited	INE494W01011
8	All About Outdoor Private Limited	INE560W01019	50	Chango Yangthang Hydro Power Limited	INE487W01015
9	Al-Noor Global Exports Private Limited	INE559W01011	51	Chemcruz Enterprises Limited	INE298W01016
10	Altum Credo Home Finance Private Limited	INE497W01014	52	Clean Solar Power (Gulbarga) Private Limited	INE591W01014
11	Amara Raja Electronics Limited	INE490W01019	53	Clean Wind Power(Piploda) Private Limited	INE592W01012
12	Amara Raja Industrial Services Private Limited	INE488W01013	54	Clover Energy Private Limited	INE430W01015
13	Amara Raja Power Systems Limited	INE489W01011	55	CMRS Projects Private Limited	INE321W01016
14	Amber Enterprises (India) Private Limited	INE371P01015	56	Daiton Energy Systems Private Limited	INE517W01019
15	Amrit Environmental Technologies Private Limited	INE442W01010	57	DBL Kalmath Zarap Highways Limited	INE534W01014
16	Amun Solarfarms Limited	INE584W01019	58	Deccan Health Care Private Limited	INE452W01019
17	Arcion Revitalization Private Limited	INE496W01016	59	Decore Thermal Power Private Limited	INE514W01016
18	Ardom Holdings Private Limited	INE533W01016	60	Divine Solren Private Limited	INE548W01014
19	Ariisto Developers Private Limited	INE453W01017	61	Dreamline Manpower Solutions Private Limited	INE577W01013
20	Astra Solren Private Limited	INE512W01010	62	DRS Warehousing (North) Private Limited	INE580W01017
21	Athena Multitrade Private Limited	INE578W01011	63	Essar Oil and Gas Exploration and Production Limited	INE581W01015
22	Atria Hydel (Krs) Private Limited	INE475W01010	64	Eternity Business Centre Limited	INE601W01011
23	Atria Solar Power (Anantapur) Private Limited	INE410W01017	65	Eye-Q Vision Private Limited	INE980T01015
24	Atria Solar Power (Ballari) Private Limited	INE415W01016	66	Fashion Lifestyles (India) Private Limited	INE550W01010
25	Atria Solar Power (Chapiri) Private Limited	INE476W01018	67	Five-Star Business Finance Limited	INE128S01013
26	Atria Solar Power (Kadapa) Private Limited	INE409W01019	68	Gale Solarfarms Limited	INE528W01016
27	Atria Solar Private Limited	INE414W01019	69	Gangdari Hydro Power Private Limited	INE457W01018
28	Atria Wind Power (Basavana Bagewadi) Private Limited	INE479W01012	70	Ganges Securities Limited	INE335W01016
29	Atria Wind Power (Bijapur 1) Private Limited	INE480W01010	71	Ganipitak Yakshraj Caplease Limited	INE907V01014
30	Atria Wind Power (Chitradurga) Private Limited	INE408W01011	72	Getdriven Technologies Private Limited	INE526W01010
31	Atria Wind Power (Kayathar) Private Limited	INE478W01014	73	GIRNARSOFT EDUCATION SERVICES PRIVATE LIMITED	INE486W01017
32	Atria Wind Power Private Limited	INE477W01016	74	Gnex Infrabuild Private Limited	INE495W01018
33	Auris Corporate Centre Limited	INE599W01017	75	Gnex Projects Private Limited	INE541W01019
34	Avadh Sugar & Energy Limited	INE349W01017	76	Greenko Energy Projects Private Limited	INE562W01015
35	Avenues Payments India Private Limited	INE443W01018	77	Greenko Wind Energies Private Limited	INE416W01014
36	Avighna Solarfarms Limited	INE455W01012	78	Greenmark Developers Private Limited	INE540W01011
37	Avinisha Realtors Private Limited	INE391W01019	79	Greenwillow Homes Private Limited	INE474W01013
38	Avion Aerosols Private Limited	INE557W01015	80	Heramba Renewables Limited	INE493W01013
39	Avyukta Constructions Private Limited	INE603W01017	81	Hindon Mercantile Limited	INE547W01016
40	Azure Power Forty Private Limited	INE381W01010	82	Honeybird Realcon Private Limited	INE549W01012
41	Backwater Technologies Private Limited	INE527W01018	83	Inder Colonizers Private Limited	INE464W01014
42	Bajaj Capital Investment Advisers Private Limited	INE485W01019	84	Indospace Capital Advisors Private Limited	INE543W01015
			85	Indospace Development Management Private Limited	INE537W01017
			86	Indospace Industrial Parks Private Limited	INE439W01016
			87	Indospace Skcl Industrial Park Oragadam Private Limited	INE440W01014

## Securities admitted for Dematerialisation during January 2017 (Contd.)

Sr. No.	COMPANY	ISIN	Sr. No.	COMPANY	ISIN
88	Indospace Skcl Industrial Park Private Limited	INE438W01018	135	Resinova Chemie Limited	INE546W01018
89	Indus Software Technologies Private Limited	INE866S01018	136	Rosebud Tradelink Private Limited	INE575W01017
90	Indusind Information Technology Limited	INE431W01013	137	Sadbhav Bhavnagar Highway Private Limited	INE470W01011
91	Intellect Bizware Services Private Limited	INE535W01011	138	Sadbhav UNA Highway Private Limited	INE454W01015
92	Jodhpur Pali Expressway Limited	INE539W01013	139	Saha Estate Developers Private Limited	INE334W01019
93	JRB Foods Private Limited	INE606W01010	140	Sami Solar (Gujarat) Private Limited	INE518W01017
94	K.P.I. Global Infrastructure Limited	INE542W01017	141	Sandla Wind Project Private Limited	INE413W01011
95	Kaleesuwari Refinery Private Limited	INE554W01012	142	Savitra Agri Industrial Park Private Limited	INE411W01015
96	Kanakadurga Finance Ltd	INE104W01016	143	Saya Buildcon Consortium Private Limited	INE507W01010
97	Kanakia Hotels & Resorts Private Limited	INE552W01016	144	Senco Gold Limited	INE602W01019
98	Karda Constructions Limited	INE278R01018	145	Serenity Business Park Limited	INE595W01015
99	KCT Renewable Energy Private Limited	INE538W01015	146	Shillong Expressway Limited	INE566W01016
100	Kohinoor Power Private Limited	INE509W01016	147	Shree Rathnam Restaurants Private Limited	INE608W01016
101	Krishana Phoschem Limited	INE506W01012	148	Shreyas Solarfarms Limited	INE525W01012
102	Kurlon Enterprise Limited	INE387W01017	149	Sintex Plastics Technology Limited	INE501W01013
103	Lambda Therapeutic Research Limited	INE419W01018	150	Slash Support Sez Private Limited	INE532W01018
104	Livgreen Cleantech Private Limited	INE561W01017	151	SM JDB Estate Private Limited	INE598W01019
105	Lords Distillery Limited	INE197W01010	152	SML Films Limited	INE362W01010
106	M J Logistic Services Limited	INE492W01015	153	Solar Edge Power and Energy Private Limited	INE563W01013
107	Magadh Sugar & Energy Limited	INE347W01011	154	SP Photovoltaic Private Limited	INE564W01011
108	Malabar Hotels Private Limited	INE451W01011	155	Sree Maruthi Marine Industries Limited	INE150W01019
109	Mangal Industries Limited	INE522W01019	156	Sresta Natural Bioproducts Private Limited	INE422W01012
110	Maple Renewable Power Private Limited	INE434W01017	157	Sriramcharan Energy and Infra Private Limited	INE582W01013
111	Maryada Commercial Enterprises and Investment Company Limited	INE372W01019	158	Sunstream City Private Limited	INE751M01015
112	Mashaal Fisheries Limited	INE573W01012	159	Suwarnsparsh Gems & Jewellery Limited	INE576W01015
113	Maximus International Limited	INE544W01013	160	Suyog Logistics Park Private Limited	INE531W01010
114	MB Wheelers Ltd	INE435W01014	161	Swagath Continental Private Limited	INE604W01015
115	Mineral Enterprises Limited	INE574W01010	162	TGB Realcon Private Limited	INE407W01013
116	Mundra Solar Technopark Private Limited	INE421W01014	163	Thapar Infra Construction India Limited	INE536W01019
117	Navitas Green Power (Fuel Management) Private Limited	INE570W01018	164	Tornado Solarfarms Limited	INE529W01014
118	NCS Sugars Limited	INE739001016	165	Triguna Hospitality Ventures (India) Private Limited	INE611W01010
119	Ncubate India Services Private Limited	INE571W01016	166	Triveni Engicons Pvt Ltd.	INE483W01014
120	Neo Solren Private Limited	INE579W01019	167	Udaipur Tollway Private Limited	INE504W01017
121	Nimbus (India) Limited	INE502W01011	168	Udipta Energy & Equipment Private Limited	INE513W01018
122	Ninaniya Estates Limited	INE558W01013	169	Unique Corporate Consultants Private Limited	INE555W01019
123	Ocean Pearl Hotels Private Limited	INE605W01012	170	Urjankur Shree Datta Power Company Limited	INE390W01011
124	Olive Ecopower Private Limited	INE433W01019	171	Urjankur Shree Tatyasaheb Kore Warana Power Company Limited	INE389W01013
125	P & M Infrastructures Limited	INE324W01010	172	Vayam Renewable Limited	INE499W01010
126	Padmanabh Alloys and Polymers Limited	INE630U01014	173	Veer Global Infraconstruction Limited	INE244W01010
127	Palash Securities Limited	INE471W01019	174	Vernes Infotech Private Limited	INE299W01014
128	Perrigo API India Private Limited	INE441W01012	175	Zen Lefin Private Limited	INE491W01017
129	Prudential Management and Services Private Limited	INE545W01010	176	Zion Holidays Private Limited	INE376W01010
130	Rashmi Housing Pvt Ltd	INE425T01011			
131	Realtime Taxsutra Services Private Limited	INE388W01015			
132	Religare Broking Limited	INE412W01013			
133	Religare Insurance Limited	INE418W01010			
134	Renew Solar Energy (Jharkhand Three) Private Limited	INE436W01012			



## NSDL-CAS (Consolidated Account Statement):

A single Consolidated Account Statement for all demat account holders to view all their investments in the securities market [viz. equity shares, preference shares, mutual funds, bonds, debentures etc.]. This information rich statement enables effective monitoring of demat portfolio. NSDL has started this service to its demat account holders from February 2015 which is available both in physical and electronic form.

### Features of NSDL-CAS:



**Summary of Portfolio**



**Asset-Wise Classification**



**Graphical Representation**



**Demographic Details**



CAS Helpline No. 1800 222 990



To subscribe to e-CAS, visit <https://nsdlcas.nsdl.com>



To know more about NSDL-CAS, give us a missed call on 8080944828



### NATIONAL SECURITIES DEPOSITORY LIMITED

4th/5th Floor, 'A' Wing, Trade World, Kamala Mills Compound, Senapati Bapat Marg, Lower Parel, Mumbai – 400 013.

## NSDL Calendar of Events

### FORTHCOMING COMPLIANCE

Particulars	Deadline	Manner of sending	Reference
Investor Grievance Report (Monthly)	By 10 <sup>th</sup> of the following month.	Through "e-Participant-Inspection Audit and Supervision System (e-PASS)	1. Circular No. NSDL/POLICY/2015/0096 dated October 29, 2015

### NSDL Offices

Head Office	Branch Offices	
<b>Mumbai</b> 4th Floor, 'A' Wing, Trade World, Kamala Mills Compound, Senapati Bapat Marg, Lower Parel, Mumbai - 400013 Tel: (022) 24994200 / 40904200 Fax: (022) 24976351	<b>Ahmedabad</b> Unit No. 407, 4th floor, 3rd Eye One Commercial Complex Co-op. Soc. Ltd., C. G. Road, Near Panchvati Circle, Ahmedabad - 380006 Tel: (079) 26461376, Fax: (079) 26461375	<b>Chennai</b> 6A, 6th Floor, Kences Towers, #1 Ramkrishna Street, North Usman Road, T. Nagar, Chennai - 600017 Tel: (044) 28143917 / 18, Fax: (044) 28144593
	<b>Kolkata</b> Unit 2E, 2nd Floor, The Millenium 235/2A, A.J.C. Bose Road Kolkata - 700020 Tel: (033) 2281 4662 / (033) 2290 4246	<b>New Delhi</b> Unit No.601,603,604, 6th Floor, Tower - A, Naurang House, Kasturba Gandhi Marg, Connaught Place, New Delhi - 110001 Tel: (011) 23353814 / 15, Fax: (011) 23353816

Investor Relationship Cell	NSDL Certification Programme
<b>Officer-In-Charge,</b> National Securities Depository Ltd. 4th Floor, 'A' Wing, Trade World, Kamala Mills Compound, Senapati Bapat Marg, Lower Parel, Mumbai - 400013 Tel: (022) 24994200 / 40904200 Fax: (022) 24976351 Email: <a href="mailto:relations@nsdl.co.in">relations@nsdl.co.in</a>	<b>Officer-In-Charge,</b> National Securities Depository Ltd. 4th Floor, 'A' Wing, Trade World, Kamala Mills Compound, Senapati Bapat Marg, Lower Parel, Mumbai - 400013 Tel: (022) 24994200 / 40904200 Fax: (022) 24976351 Email: <a href="mailto:trainingdept@nsdl.co.in">trainingdept@nsdl.co.in</a>

For more information, email us at [info@nsdl.co.in](mailto:info@nsdl.co.in)